



interaction
empowering people

DIVERSITY AND INCLUSION POLICY

Easy Read Guide



INTERACTION'S POLICY



Interaction recognises people from Aboriginal and different cultural backgrounds have positive impacts on our services



Interaction will respect your cultural background when developing, practicing and reviewing our policies



Interaction respects and appreciates that Aboriginal culture and communities are diverse and have many tribes and groups across NSW



Interaction is flexible when it comes to designing your service to meet your needs and cultural preferences

STAFF ROLES



Staff will talk with Aboriginal and cultural specialists when we need to and to learn more about your customs and practices



Staff will regularly update their knowledge of your cultural background



Staff will learn how to support you to keep in touch with your culture and community



We can help you build your reading and writing skills if you would like

CULTURAL COMMUNITY



We understand that story telling and silence are sometimes how Aboriginal people reflect on things



We understand that extended family is important to you and it can include both blood and non-blood relations



We understand that you may be raised by your whole community and we will discuss with many of them when making important decisions. This will also include your guardian



Staff will talk with your cultural community when planning your services, if you want them to

INTERPRETERS



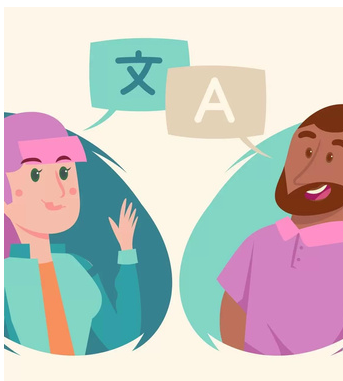
We understand that family might affect the decisions that you make. We will get interpreters if you or your family need it



Interpreters will translate what we are saying so you and your family can understand the information



We will provide **translated material** if you need it so everyone can understand



Translated material is when something is changed from one language into another and means the same thing